




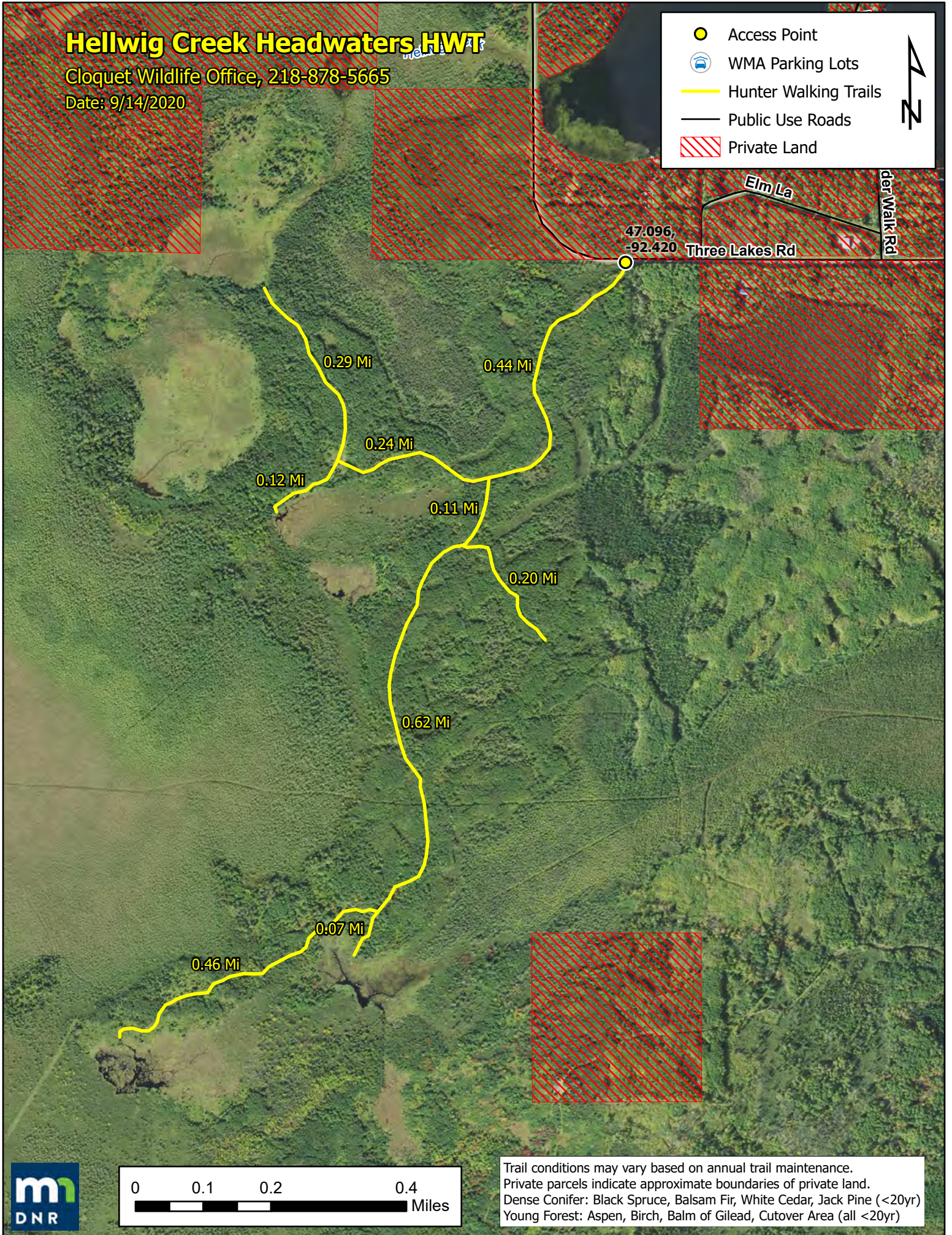


# Hellwig Creek Headwaters HWT

Cloquet Wildlife Office, 218-878-5665

Date: 9/14/2020

-  Access Point
-  WMA Parking Lots
-  Hunter Walking Trails
-  Public Use Roads
-  Private Land



47.096,  
-92.420

Three Lakes Rd

Elm La

der Walk Rd

0.29 Mi

0.44 Mi

0.24 Mi

0.12 Mi

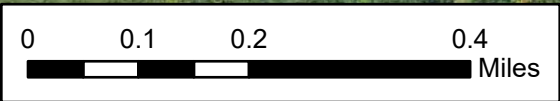
0.11 Mi

0.20 Mi

0.62 Mi

0.07 Mi

0.46 Mi



Trail conditions may vary based on annual trail maintenance.  
Private parcels indicate approximate boundaries of private land.  
Dense Conifer: Black Spruce, Balsam Fir, White Cedar, Jack Pine (<20yr)  
Young Forest: Aspen, Birch, Balm of Gilead, Cutover Area (all <20yr)