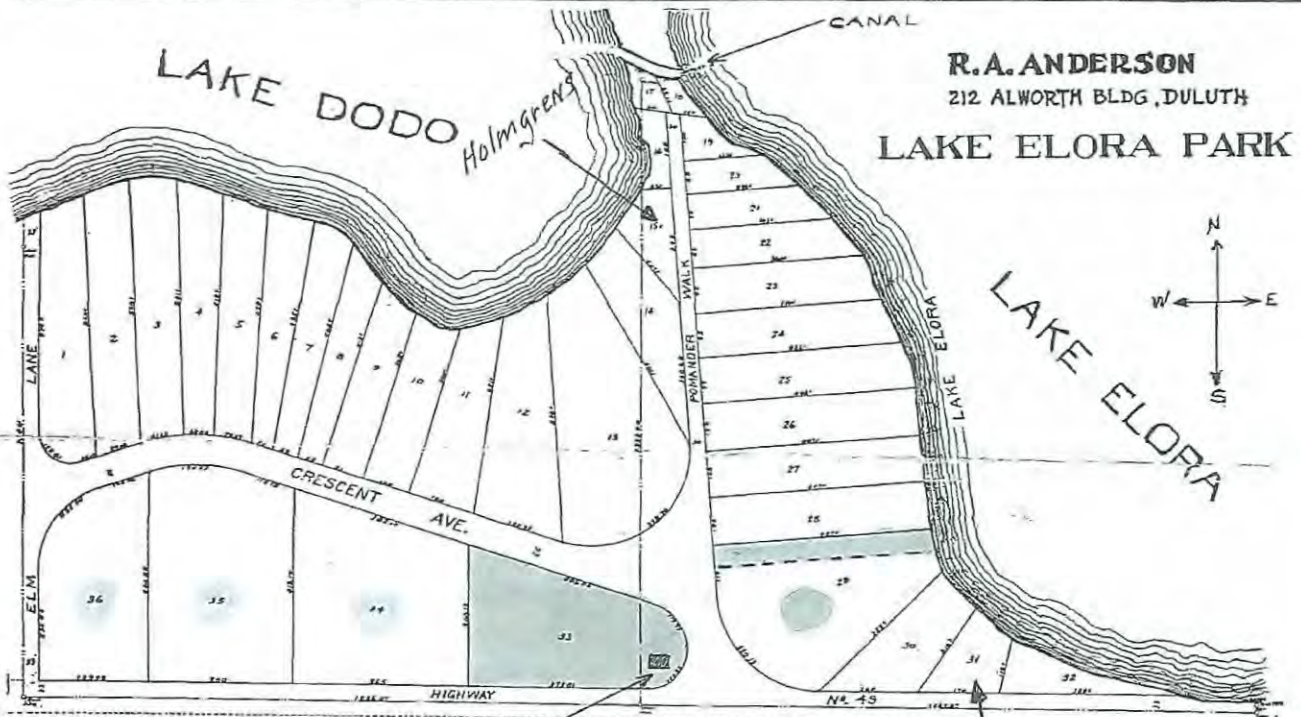


❖ *Fine Cabin Sites on Lakes Dodo and Elora* ❖



**R.A. ANDERSON**  
212 ALWORTH BLDG., DULUTH

**LAKE ELORA PARK**

Detail plat of cabin tracts and the canal connecting both lakes.

*Charlie Mehrman's place*

**A Place to Go**

You well know the universal question when the family is all ready for a drive is, "Where shall we go?" Well, an attractive cabin site on one of these lakes effectively supplies the answer because it provides an ideal "place to go." The first place to go should, therefore, be out to see these beautiful tracts.



*Splendid for all forms of boating.*

**Fishing and Hunting**

Good catches of Rock Bass, Northern Pike, and Sun Fish are made in the lakes. Partridge are also plentiful in the Fall, while deer may be seen along the highway practically every month in the year. Hunting, therefore, is excellent during the open season.

**Berries and Gardens**

Raspberries grow almost like weeds. Blueberries are plentiful, and wild cranberries are also found in certain sections of the back country; in fact, many cabin residents put up much fruit during their summer stay. Fine gardens can be developed. Sweet corn and tomatoes mature considerably earlier than in the city due to the warmer temperature.



*Nicely wooded with no high banks.*

- Remainder of Lot 29 purchased later*
- original land purchase*
- land later bought from Warner Estate*

We'll be expecting and "seeing you soon."

**R. A. ANDERSON**

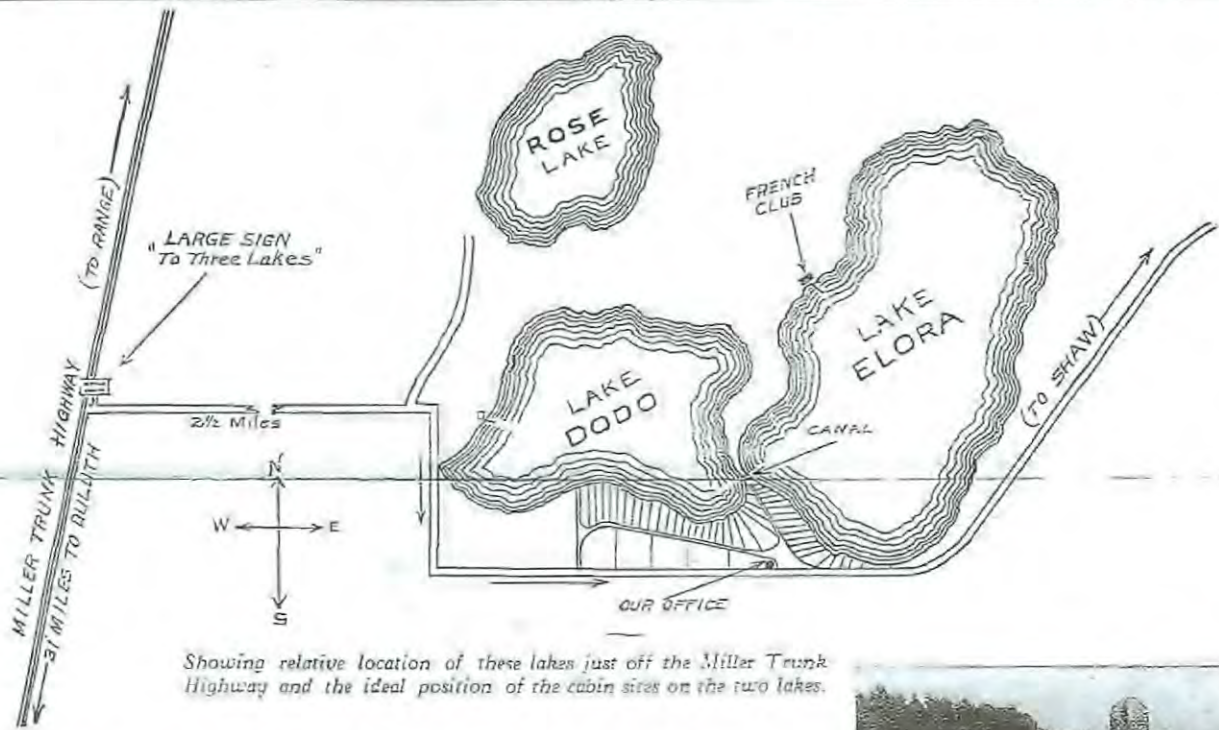
212 Alworth Building

Melrose 2347

*See our Salesman, Ole Roberg at Three Lakes Tavern*

**A Place to Go**

# ✧ Fine Cabin Sites on Lakes Dodo and Elora ✧



Showing relative location of these lakes just off the Miller Trunk Highway and the ideal position of the cabin sites on the two lakes.

## Special Price Concessions - Very Low

When this land was originally platted before the depression, tracts on Lake Dodo sold at \$6.00 per front foot, and \$7.00 on Lake Elora. but, in order to clean them up now, the prices have been reduced to \$275.00 to \$350.00 per tract.

## Terms

Cash, \$25.00; balance, \$5.00 per month, and Torren's title.

## Desirable Restrictions

Chief among the desirable restrictions on this property are: No tarpaper shacks or other unsightly buildings will be permitted, nor will undesirable persons be allowed to purchase any of these cabin sites, for we control practically all the available land on the south side of these two lakes, and we wish to have it get into desirable hands. You will, therefore, appreciate our solicitude in keeping this property clean and strictly first class in every respect.



Come on in—the water's fine—nice and warm, white hard sand and gradual depth.



A bit of beautiful Shore Line.

## Bathing

You will appreciate the clean, white, hard, sandy beaches and bottoms, the shallow water and its gentle slope in depth, with no sudden drop-offs which insures, not only greater safety for the children, but also results in warmer water whether for play, for wading or for bathing.

## Boating and Canoeing

The two lakes are connected by a small canal, which materially increases the area for canoeing, rowing, sailing or launches, and, thereby, affords a much greater diversity of shore line and scenic beauty. The lakes are large enough for all boating purposes, yet small enough for general safety.

# A Place to Go